

An aerial view of a group of about ten people and two dogs relaxing on a rectangular floating dock. The dock is made of a light-colored, perforated material and is situated on dark blue water. The group is arranged in a circle, sitting on red and white Adirondack chairs. A small round table in the center holds drinks and a vase of flowers. The scene is bright and sunny, with shadows cast on the dock's surface.

THRUFLOW

PREMIUM DECKING SOLUTIONS

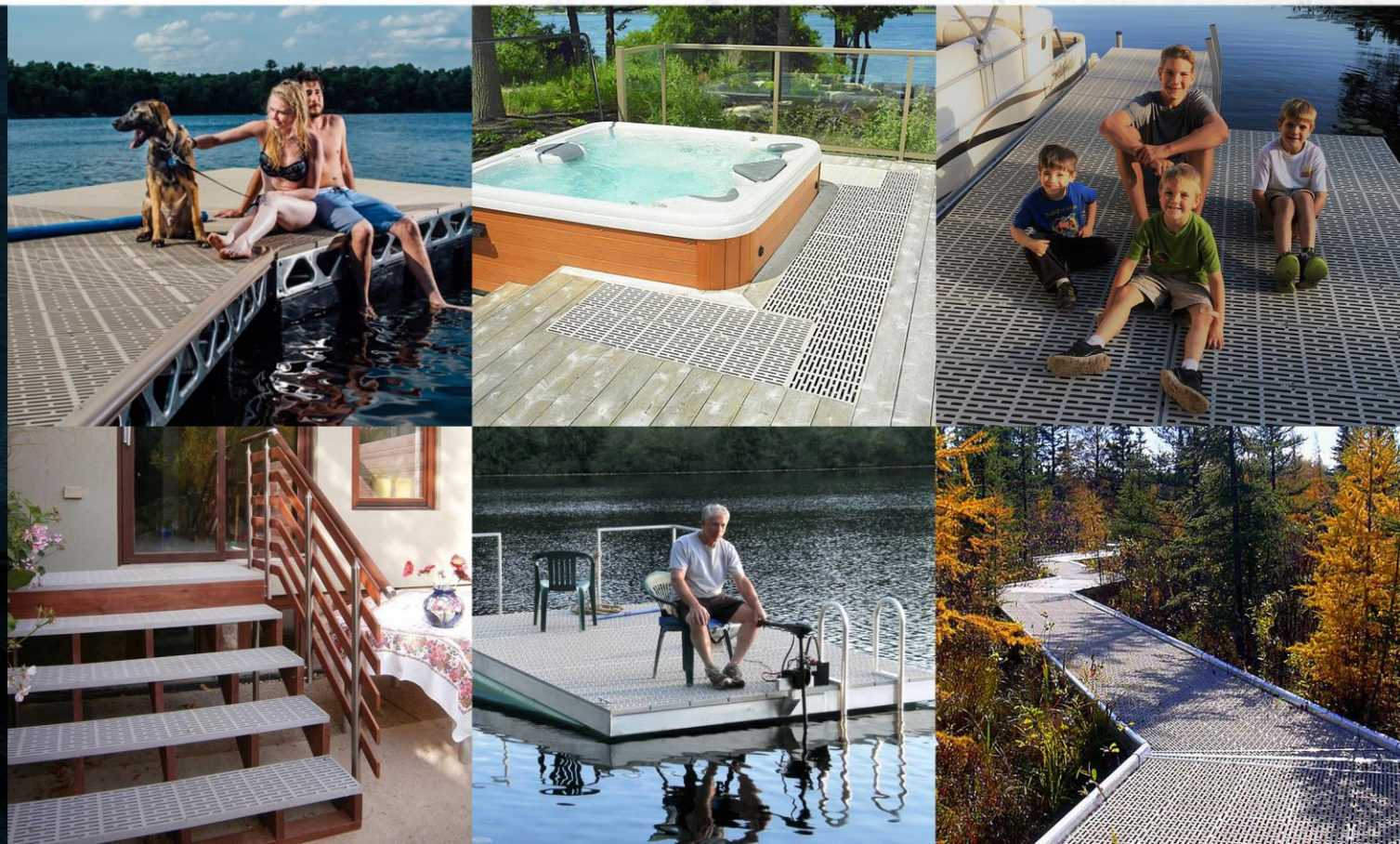
GO WITH THE FLOW

THRU-*FLOW*

PREMIUM DECKING SOLUTIONS

The Last Deck Solution You Will Ever Need

Built to defy Mother Nature and the elements:
sun, storms, rot, and insects – bring it on, our panels
can withstand a lifetime of abuse while providing you
the ultimate decking experience.



WHY CHOOSE OUR PANELS?

**Imitation is the sincerest form of flattery,
and we are proud to be the pioneers of this industry.**

Thru-Flow's owner, Otto Kjeldsen, is a mold designer who started in the auto industry when he was a very young age. Now his 5 decades of experience, combined with a lifetime living surrounded by water gives him an incredible advantage in designing and producing these revolutionary decking panels.

Never being one to rest on our laurels, Thru-Flow continues to innovate incorporating new technology and materials into our panels, providing consumers with more diverse options, and therefore an even greater decking experience.

LEGACY XP
SERIES

IMPACT
SERIES

SIIRGE
SERIES

SOL
SERIES

AQUA-DEK
SERIES

GO WITH THE FLOW

PREMIUM DECKING SOLUTIONS FOR DECKS, DOCKS, WALKWAYS AND MARINAS



EASY ASSEMBLY

Our panels are lightweight, have tabs that interlock making install a breeze, and an elongated mounting clearance feature.



MAINTENANCE-FREE

ThruFlow panels won't succumb to rot or insect damage, and are UV resistant. The open-surface design protects your application against hydraulic pressure and uplift of water and wind.



PERMANENT

ThruFlow designs and manufactures premium permanent decking solutions to withstand all Mother Nature can throw at them.

LEGACY XP

SERIES



THRU-FLOW
PREMIUM DECKING SOLUTIONS



LEGACY XP
SERIES

Designed to Withstand Tough Environments and Enjoy Not So Tough

Made from GF reinforced virgin Polymer, the Legacy XP Series sets a standard for strength and durability. Never deal with rotting wood, rusting aluminum, or fading stain again.

PROVEN PERFORMANCE

Our Legacy panel design has proven itself in commercial marinas and natural parks throughout the world.

LIGHTWEIGHT DESIGN

On a per sq. ft. basis, ThruFlow is 70% lighter than other decking products:
1.4lbs/ft²

LIFETIME LIMITED WARRANTY

We're confident in our panels' design and quality; for added peace of mind ThruFlow offers a Lifetime Limited Warranty.



UV RESISTANT

Industry leading UV protection,
stays cool in the summer sun.

43%

LIGHT PENETRATION



NON-SLIP

Wet or dry 360 degree
non-slip surface exceeds
ADA specs.



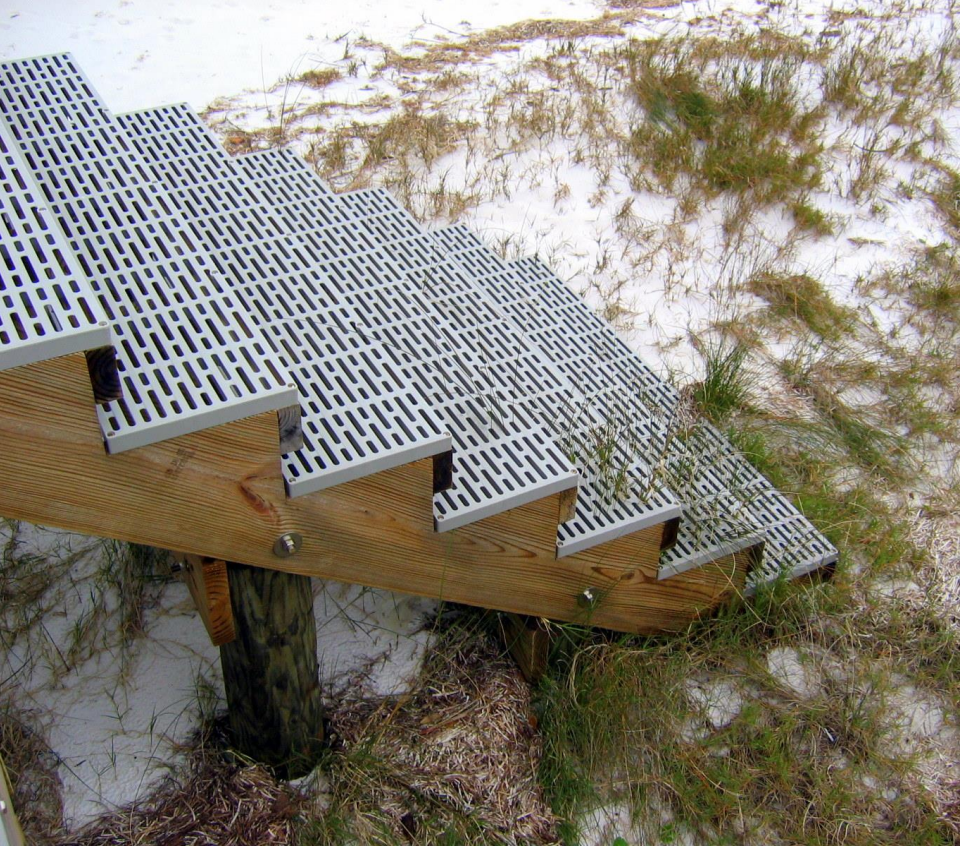
LEGACY XP

SERIES

The Panel That Revolutionized An Industry

The original ThruFlow panel, Legacy XP, is a revolutionary take on prefabricated panels for decks, docks and walkways.

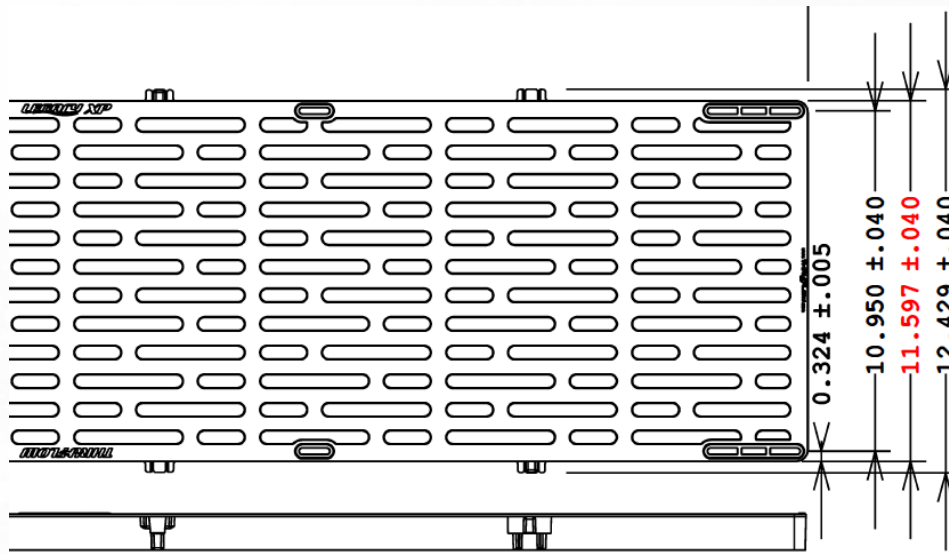
THRUFLOW
PREMIUM DECKING SOLUTIONS



LEGACY XP
SERIES

Comes in a Tab and No Tab Option

Whether you want to build stairs or finish your dock with a smooth look, the 3' and 4' Legacy XP comes with a no tab option. See dimensions below for difference in measurement.



NO TABS MEANS DIFFERENT DIMENSIONS

The Legacy XP mold was designed to have inserts to cleanly manufacture the 3' and 4' panels without the tabs. As shown here, this does not change the surface area of the panel by only removing the tabs.

LEGACY XP SERIES



PRODUCT SPECS

LEGACY XP	
COLOUR	Light Grey, Maple, Seafoam
SIZE	1' x 3', 1' x 4', 1' x 5', *4' x 4'
THICKNESS	All panels 1.2" thick
SUBSTRUCTURE	3' panel - 18" centers (also available in "no tab" option) 4' panel - 16" centers (also available in "no tab" option) 5' panel - 15" centers
LIGHT PENETRATION	43%
LOAD	All panel sizes exceed 1300 lbs load capacity surpassing the commercial construction requirements
LIGHTWEIGHT	55% lighter 1.6 lbs/ft ²
UV PROTECTION	Industry leading UV protection
MATERIAL	Base material is reinforced virgin polypropylene utilizing new bonding technology
SAFETY	360° engineered non-slip surface exceeds ADA specs
WARRANTY	Lifetime Limited Warranty

*4' x 4' panel is traditional Legacy

IMPACT

SERIES



THRU:LOW
PREMIUM DECKING SOLUTIONS



ThruFlow Quality At An Everyday Price

Impact panels use a non-reinforced Polymer construction, which maintains the ThruFlow appearance, strength, and durability, while appealing to the cost conscious consumer.

PROVEN PERFORMANCE

Our impact and load valves tested well against leading price point marine panels.

LIGHTWEIGHT DESIGN

On a per sq. ft. basis, ThruFlow is 70% lighter than other decking products:
1.4lbs/ft²

LIFETIME LIMITED WARRANTY

We're confident in our panels' design and quality; for added peace of mind ThruFlow offers a Lifetime Limited Warranty.



UV RESISTANT

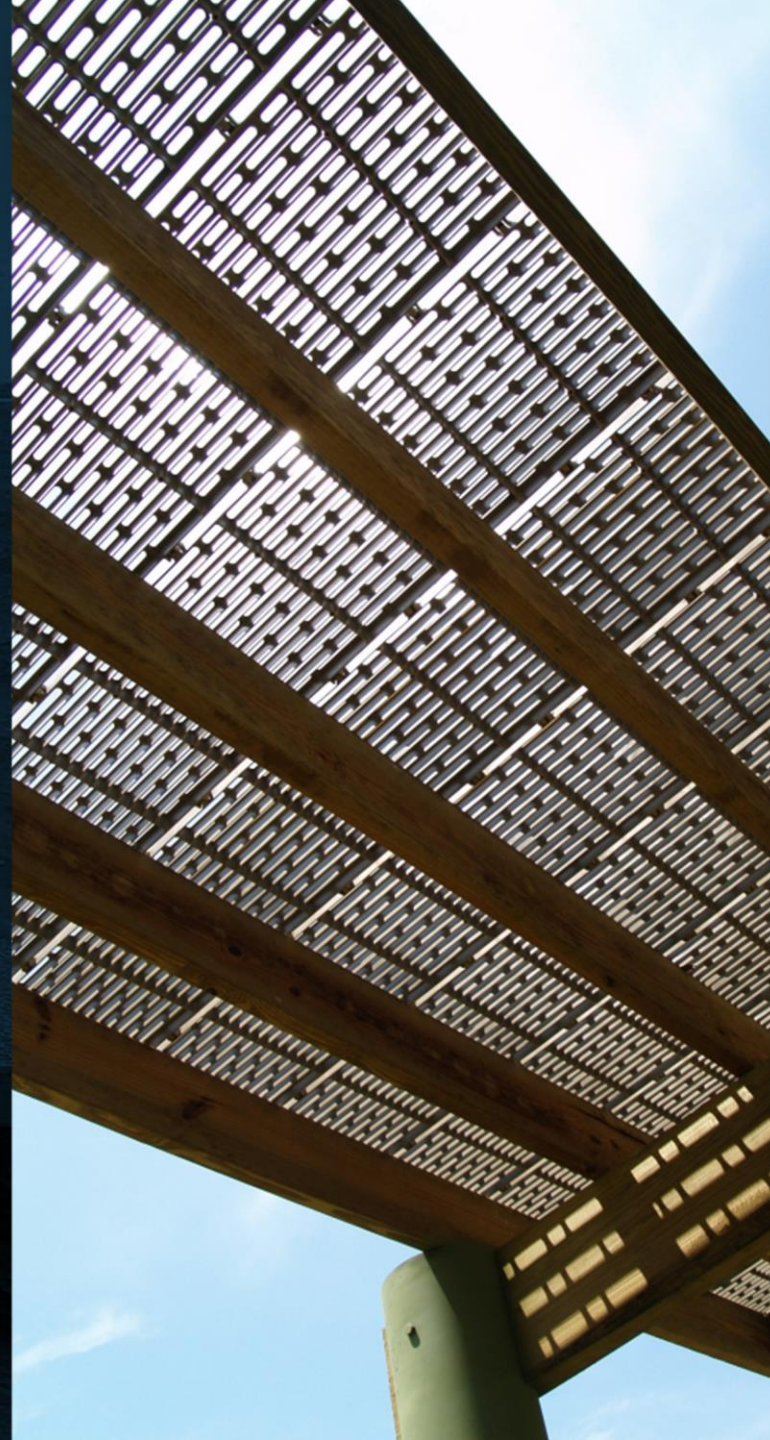
Industry leading UV protection,
stays cool in the summer sun.

50% LIGHT PENETRATION



NON-SLIP

Wet or dry 360 degree
non-slip surface exceeds
ADA specs.



ThruFlow's Most Cost Effective Panels

Our Impact panels combine our trademark eco-friendly,
maintenance-free design with consumer-first pricing,
so that everyone can enjoy our products.

IMPACT

SERIES



PRODUCT SPECS

IMPACT	
MATERIAL	Base material is non-reinforced virgin polypropylene
SIZE	1' x 3', 1' x 4', 1' x 5'
THICKNESS	All Panels 1.2" thick
LOAD	All panel sizes exceed 1300lbs load capacity surpassing the commercial construction requirements
COLOURS	Light Grey, Maple
ULTRAVIOLET PROTECTION	Industry leading UV protection
LIGHTWEIGHT	On a per sq. ft. basis, ThruFlow™ is 70% lighter than other decking products: 1.4lbs/ft ²
LIGHT PENETRATION	50%
SAFETY	360° engineered non-slip surface exceeds ADA specs
SUBSTRUCTURE	3' panel - 18" centers 4' panel - 16" centers 5' panel - 15" centers
THRUFLOW™ WARRANTY	Lifetime Limited Warranty



SIIRGE

SERIES



Designed for the Toughest Environments

Our Surge panels utilize GF reinforced fiber in a Polymer base compound. With larger openings, Surge gives two greater levels of insurance to mitigate the forces of the ocean. Also, larger opening gives greater protection to what lives below your structure by letting in more sunlight.

EXTREME DURABILITY

Extreme durability and open design make Surge a great solution for docks and marinas.

LIGHTWEIGHT DESIGN

On a per sq. ft. basis, ThruFlow is 70% lighter than other decking products:
1.4lbs/ft²

LIFETIME LIMITED WARRANTY

We're confident in our panels' design and quality; for added peace of mind ThruFlow offers a Lifetime Limited Warranty.



UV RESISTANT

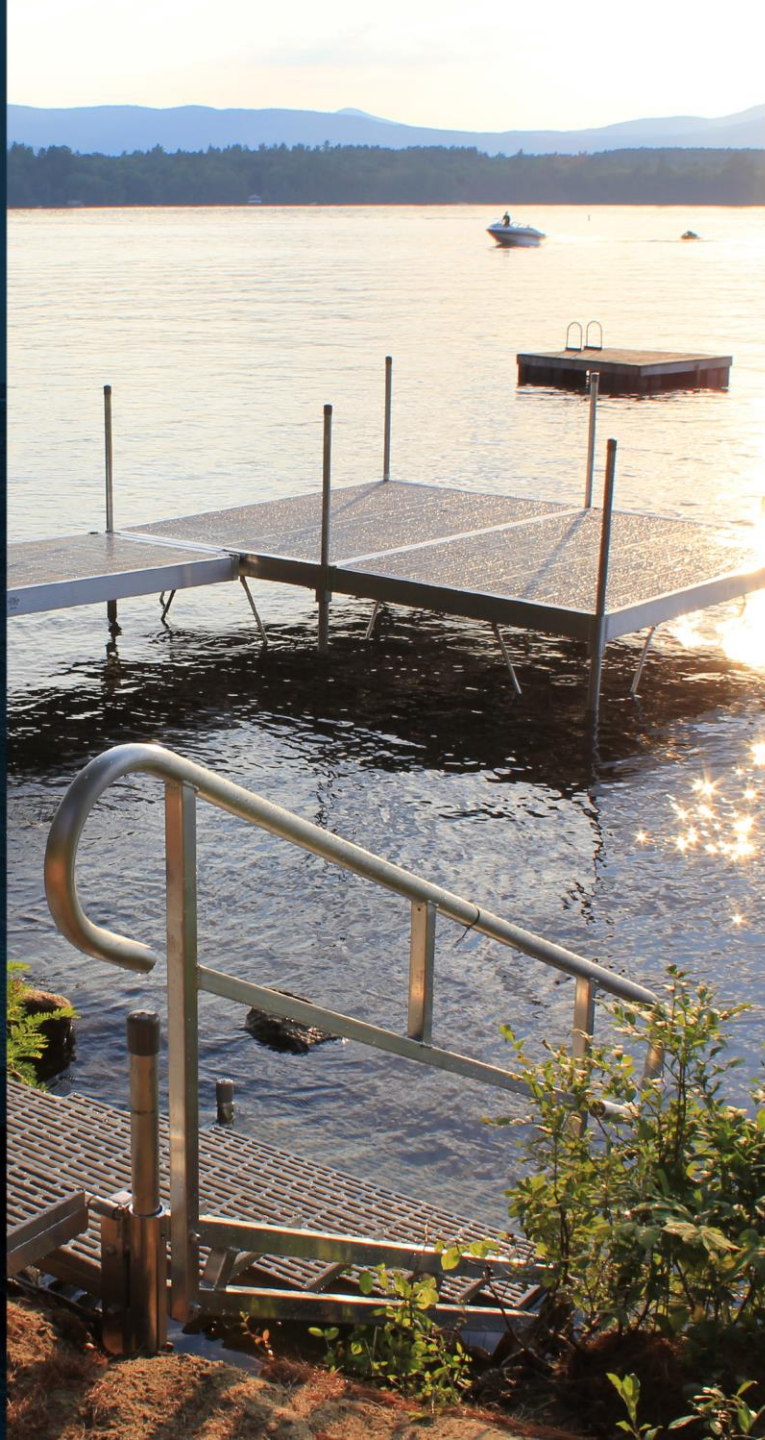
50%
(SURGE 50)

60%
(SURGE 60)

LIGHT
PENETRATION



NON-SLIP



The Decking Solution The Planet Has Been Waiting For! Durable & Eco-Friendly

The Surge Series includes two models:

SURGE 50 and SURGE 60

Surge 50 allows 50% of sunlight to pass through and Surge 60 permits 60% to reach vegetation and aquatic life below, minimizing the impacts on our eco-systems.

SURGE

SERIES



PRODUCT SPECS

	SURGE 50	SURGE 60
MATERIAL	Base material is reinforced virgin polypropylene utilizing new bonding technology	
SIZE	1' x 3', 1' x 4', 1' x 5'	1' x 4'
THICKNESS	All Panels 1.2" thick	
LOAD	All panel sizes exceed 1300lbs load capacity surpassing the commercial construction requirements	
COLOURS	Light Grey, Maple	
ULTRAVIOLET PROTECTION	Industry leading UV protection	
LIGHTWEIGHT	On a per sq. ft. basis, ThruFlow™ is 70% lighter than other decking products: 1.4lbs/ft ²	
LIGHT PENETRATION	50%	60%
SAFETY	360° engineered non-slip surface exceeds ADA specs*	
SUBSTRUCTURE	3' panel - 18" centers 4' panel - 16" centers 5' panel - 15" centers	
THRUFLOW™ WARRANTY	Lifetime Limited Warranty	



SOL

SERIES



Power Your Dock With SOL

The solar insert is 100% walkable and constructed with super-durable reinforced Polymer, the same material as the Surge Series of panels.

COMPATIBLE AND VERSATILE

Works with Impact, Legacy and Surge Series, as well as non ThruFlow top surfaces - easily remove a panel on your dock and replace it with SOL.

LIGHTWEIGHT DESIGN

On a per sq. ft. basis, ThruFlow is 70% lighter than other decking products: 1.4lbs/ft²

NON-SLIP SURFACE

Feel safe and confident climbing out of the water with our panels' wet or dry 360 degree non-slip surface.



Approximately 98% Efficient in Direct Sunlight

The ThruFlow Sol Series adds a fully integrated solar panel to our signature interlocking panel design.



STATE-OF-THE-ART SOLAR TECHNOLOGY

adds power to your dock.



POWER BOAT LIFTS

and dock lights with the sun's natural energy.



MULTIPLE BATTERY CONFIGURATIONS

for all your energy needs.



MAINTENANCE-FREE

so you can spend less time caring for your ThruFlow Sol Series and more time enjoying it.



PRODUCT SPECS

SOL

Material	Base Material is reinforced virgin polypropylene utilizing new bonding technology
Size	1' x 4'
Thickness	All Panels 1.2" thick
Load	All panel sizes exceed 1300lbs load capacity surpassing the commercial construction requirements
Colours	Light Grey, Maple
Ultraviolet Protection	Industry leading UV protection
Lightweight	On a per sq. ft. basis, ThruFlow™ is 70% lighter than other decking products: 1.4lbs/ft2
Substructure	4' panel - 16" centers
ThruFlow™ Warranty	Manufacturer's Warranty
Power Output	12-13.8 Volts - 24 Watts - 2 Amps

AQUA-DEK

SERIES



THRU-FLOW
PREMIUM DECKING SOLUTIONS



AQUA-DEK
SERIES

Less Structure Means Less Labor & Expense

This 2' x 4' copolymer polypropylene panel is designed to span 24" on centre framing with moulded in, unique counter-sunk fastener locations – saving you time and money.

ECO-FRIENDLY DESIGN

Open-surface design allows sunlight and water to pass through, reducing the impact on the environment and protecting against weather damage.

LIGHTWEIGHT DESIGN

Aqua-Dek panels are 65%-75% lighter than other decking products.

LIFETIME LIMITED WARRANTY

We're confident in our panels' design and quality; for added peace of mind ThruFlow offers a Lifetime Limited Warranty.



UV RESISTANT

Industry leading UV protection,
stays cool in the summer sun.

45%

LIGHT PENETRATION



NON-SLIP

Open surface area means
no standing water, creating
a safe walking surface



AQUA-DEK

SERIES

Easy to Install & Easy On Your Wallet

Aqua-Dek panels can be mounted to wood, aluminum
or steel frames, and will not warp, rot or split
over time.

THRU-FLOW
PREMIUM DECKING SOLUTIONS

AQUA-DEK

SERIES



PRODUCT SPECS

	AQUA-DEK
MATERIAL	Base material is non-reinforced virgin polypropylene
SIZE	2' x 3', 2' x 4'
THICKNESS	All Panels 1.2" thick
LOAD	1000lbs on 24" centre framing
COLOURS	Light Grey, Tan
ULTRAVIOLET PROTECTION	Industry leading UV protection
LIGHTWEIGHT	On a per sq. ft. basis, ThruFlow™ is 70% lighter than other decking products: 1.4lbs/ft ²
LIGHT PENETRATION	45%
SAFETY	360° engineered non-slip surface exceeds ADA specs*
SUBSTRUCTURE	3' panel - 18" centers 4' panel - 24" centers
THRUFLOW™ WARRANTY	Lifetime Limited Warranty**

LET'S COMPARE

WHICH
PANEL
IS FOR
YOU?

	AQUA-DEK	IMPACT	LEGACY XP	SURGE 50	SURGE 60	SOL
COLOUR	Light Grey, Tan	Light Grey, Maple	Light Grey, Maple, Seafoam		Light Grey, Maple	
SIZE	2' x 3', 2' x 4'	1' x 3', 1' x 4', 1' x 5'	1' x 3', 1' x 4', 1' x 5', *4' x 4'	1' x 3', 1' x 4', 1' x 5'	1' x 4'	1' x 4'
THICKNESS	All panels 1.2" thick**					
SUBSTRUCTURE	2' x 3' - 18" centers 2' x 4' - 24" centers		3' panel - 18" centers 4' panel - 16" centers 5' panel - 15" centers			
LIGHT PENETRATION	45%	50%	43%	50%	60%	N/A
LOAD	1000 lbs	All panel sizes exceed 1300 lbs load capacity surpassing the commercial construction requirements				
LIGHTWEIGHT	70% lighter at 1.4 lbs/ft²		55% lighter at 1.6 lbs/ft²		70% lighter at 1.4 lbs/ft²	
UV PROTECTION	Industry leading UV protection					
MATERIAL	Base material is non-reinforced virgin polypropylene		Base material is reinforced virgin polypropylene utilizing new bonding technology			
SAFETY	360° engineered non-slip surface					
THRUFLOW™ WARRANTY	Lifetime Limited Warranty					

*4' x 4' panel is traditional Legacy

**Aqua-Dek panels are 1" thick with 3" ribs

Visit www.thruflow.com
to find a dealer near you.
Or contact us at:

THRUFLOW

PREMIUM DECKING SOLUTIONS



THRUFLOW.COM

888-478-3569

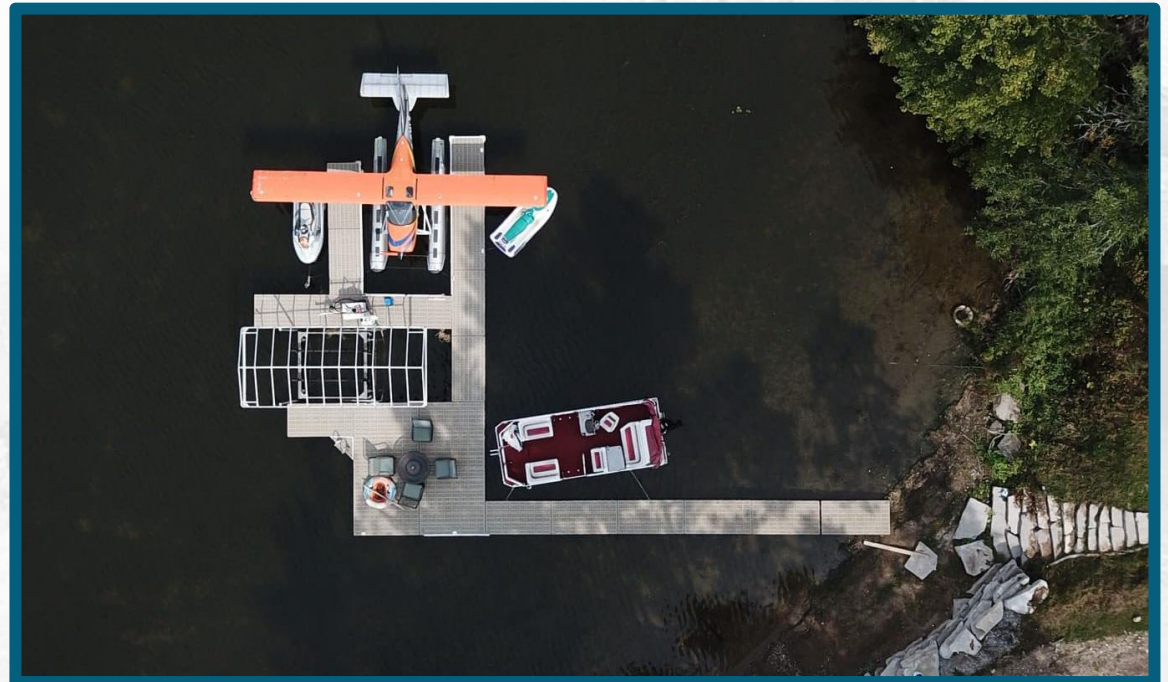
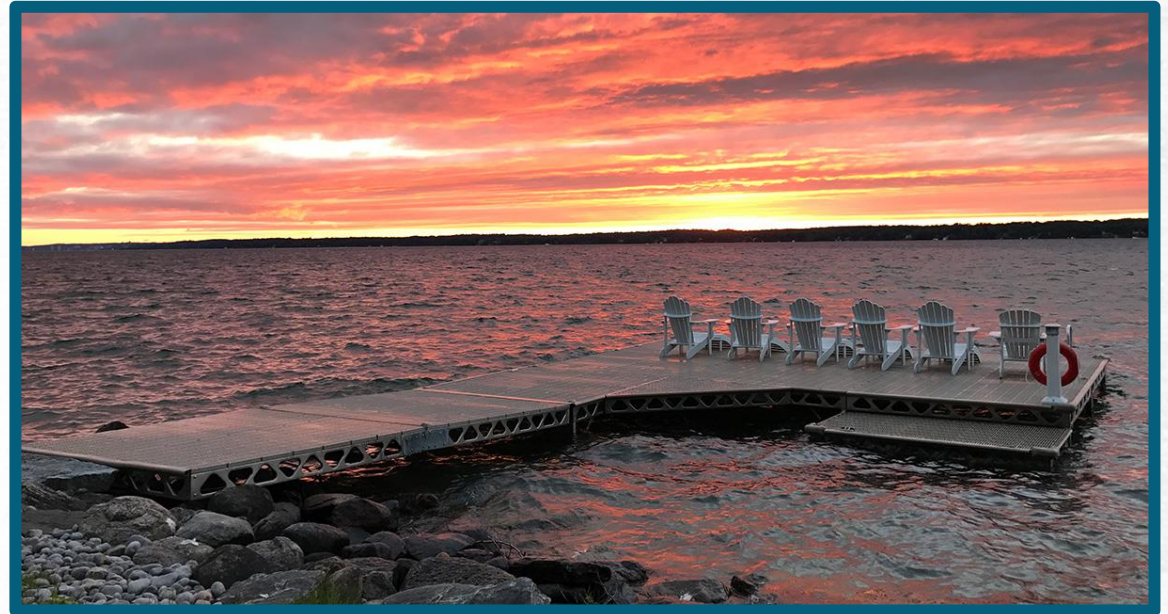
sales@thruflow.com

Product Applications



Docks and Piers

- The main use of ThruFlow (80-90%)
- Our distribution strategy and marketing activities are designed around the marine construction market



Product Applications



Walkways

- The other main use
- ThruFlow is often used on ramps and walkways in a variety of commercial applications
 - State parks
 - Marinas
 - Boardwalks
 - Gangways



Product Applications



Decks and Patios

- ThruFlow is sometimes used in these applications to avoid the maintenance and refinishing that comes with other decking
- Pass-through architecture allows cool air to flow to people on the deck and stop rot under the deck

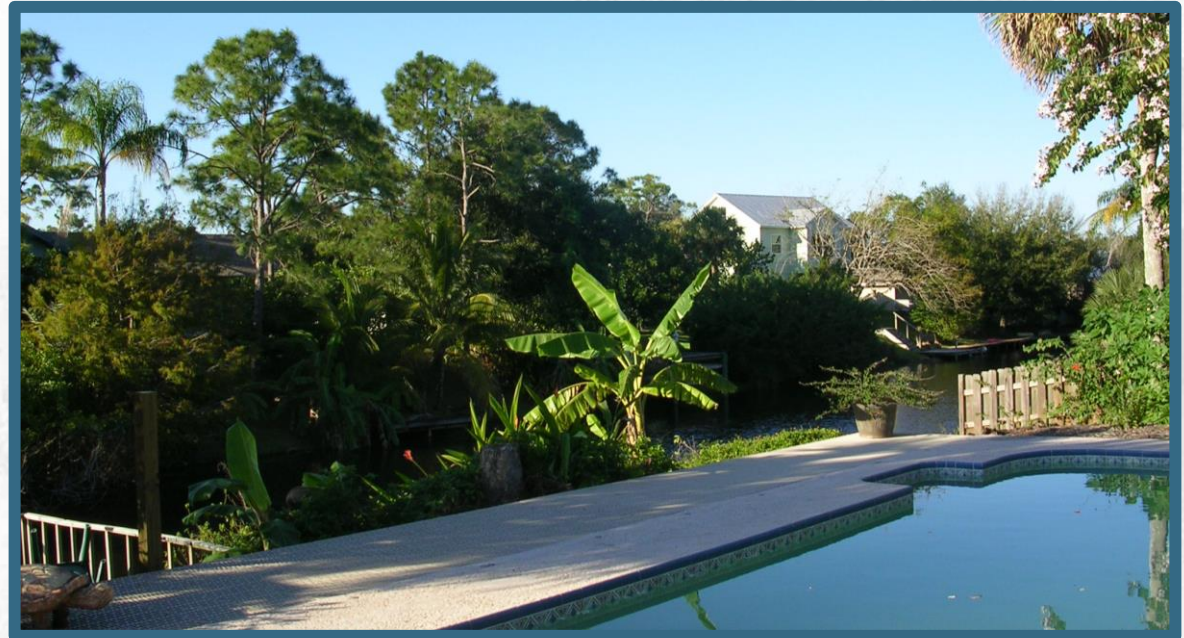


Product Applications



Pools and Spas

- A popular application for ThruFlow
- The extreme anti-slip surface of ThruFlow, even when wet, makes it ideal for a safe solution for decking around pools and spas/hot tubs



Product Applications



Attic and Basement Storage

- Light-weight and grated design makes attic storage easy and accessible
- Basement storage stays high and dry when ThruFlow is used as flooring or shelving



Product Applications



Stairs and Ramps

- Many of our manufacturing customers use ThruFlow for stair applications, particularly on docks since the product is unaffected by being submerged in water



THRUFLOW

PREMIUM DECKING SOLUTIONS



Benefits of ThruFlow?



Maintenance-free

- No staining, painting, sealing or warping
- Stays clean without any special or expensive cleaning products

THRUFLOW

PREMIUM DECKING SOLUTIONS



Benefits of ThruFlow?

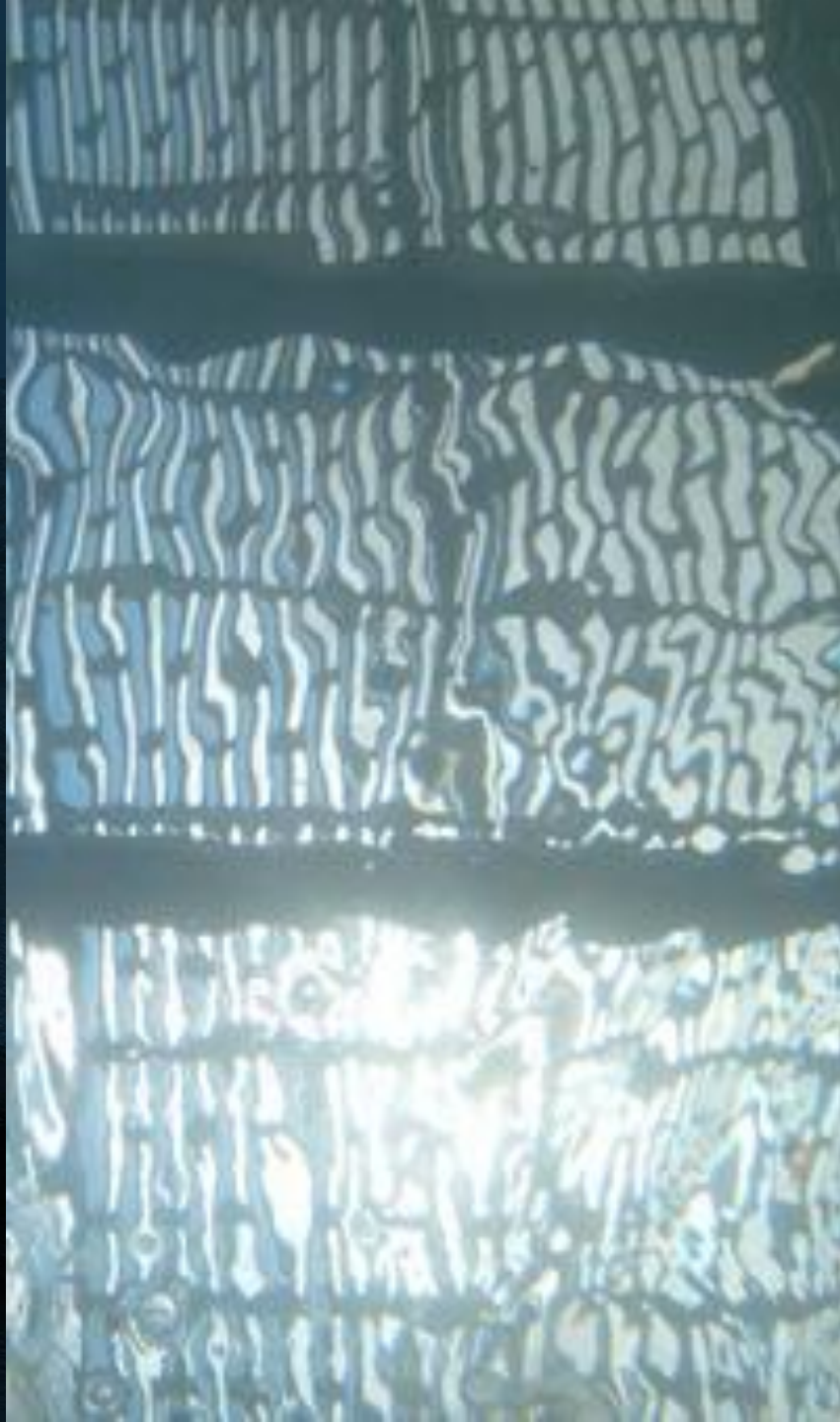


Bare-Foot Friendly

- Designed and engineered to be comfortable under bare feet
- Massages bare feet with unique non-slip surface

THRUFLOW

PREMIUM DECKING SOLUTIONS



Benefits of ThruFlow?



Eco-Friendly

- Open architecture allows sunlight to pass through at 43%, 50% and 60%
- Approved by the U.S. Army Corps of Engineers, ThruFlow protects flora, fauna and fish beds below your dock

THRUFLOW

PREMIUM DECKING SOLUTIONS



Benefits of ThruFlow?



Stays Cool

- Grated design and material combine to limit any retention of heat in product
- ThruFlow feels cool underfoot

THRUFLOW

PREMIUM DECKING SOLUTIONS



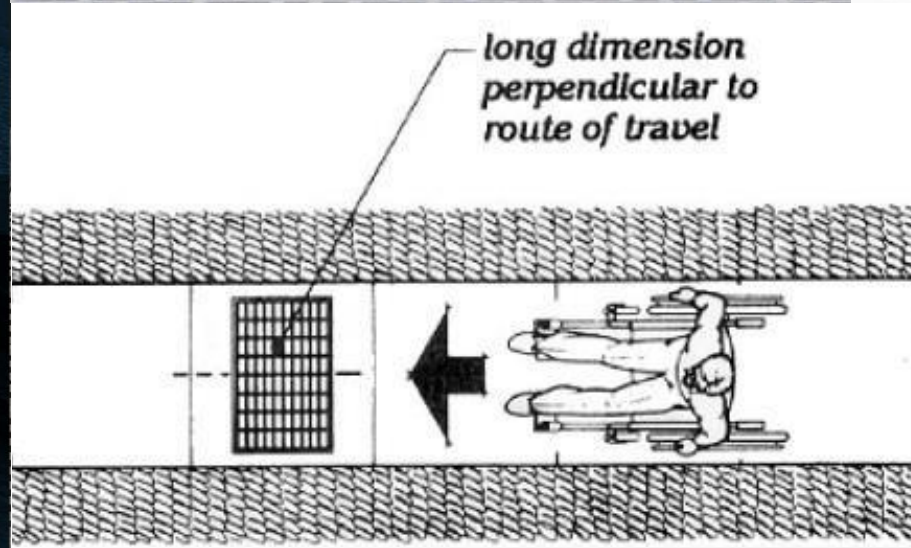
Benefits of ThruFlow?

Attractive

- Clean lines and timeless design lend an attractiveness to the product that will last
- ThruFlow's design is no accident: Curved lines and busy patterns sound good on paper, but make walking on a raised structure very unpleasant

THRUFLOW

PREMIUM DECKING SOLUTIONS



Benefits of ThruFlow?



ADA Compliant

- If gratings are located in walking surfaces, then they shall have spaces no greater than ½" (13 mm) wide in one direction. If gratings have elongated openings, then they shall be placed so that the long dimension is perpendicular to the dominant direction of travel.

THRUFLOW

PREMIUM DECKING SOLUTIONS



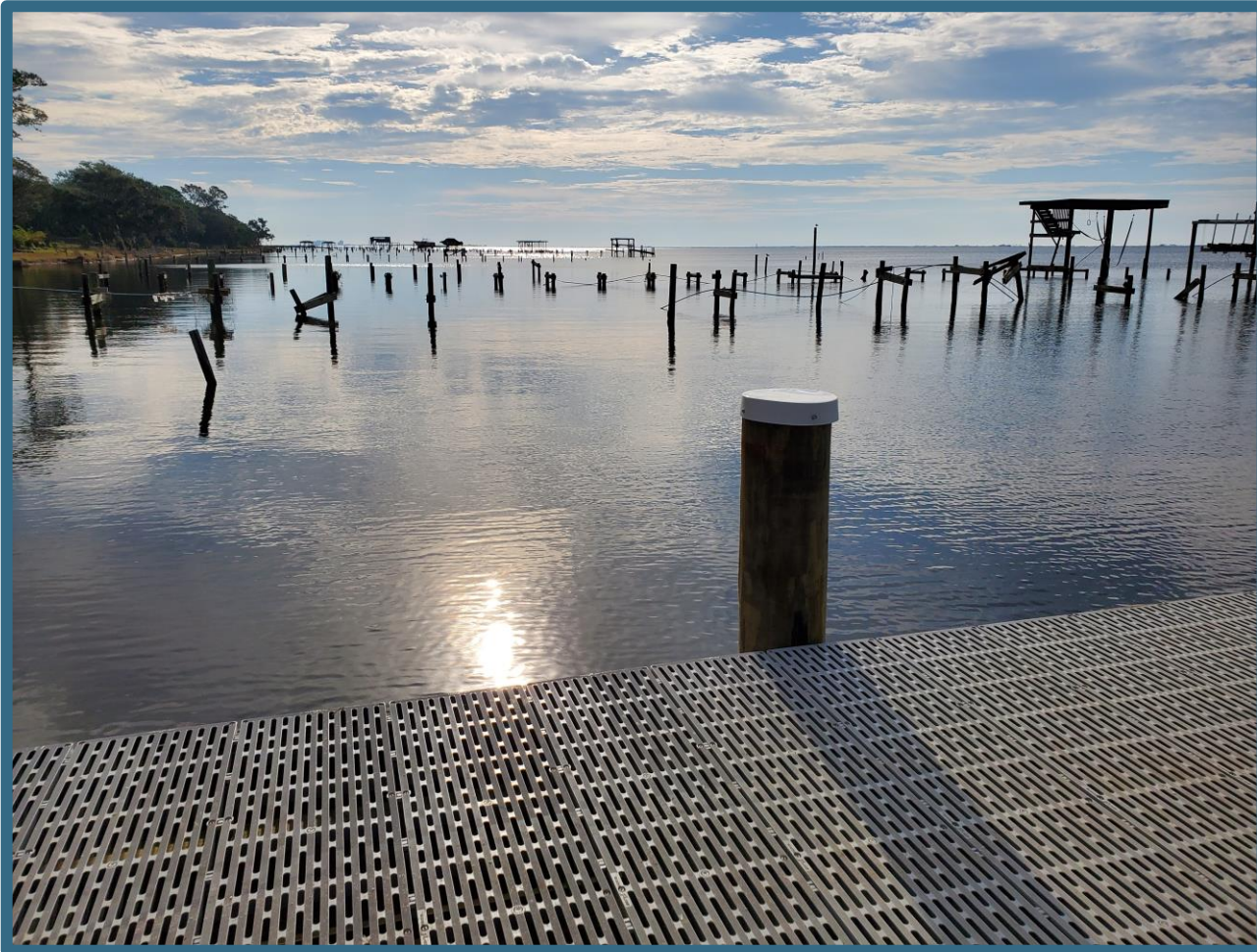
Benefits of ThruFlow?



Storm-Resistant

- Docks with ThruFlow have survived hurricanes in Florida where ALL other docks have been destroyed
- With 43% to 60% open surface, the effects from waves, wind, and storm surges are minimized

Benefits of ThruFlow?



Storm-Resistant

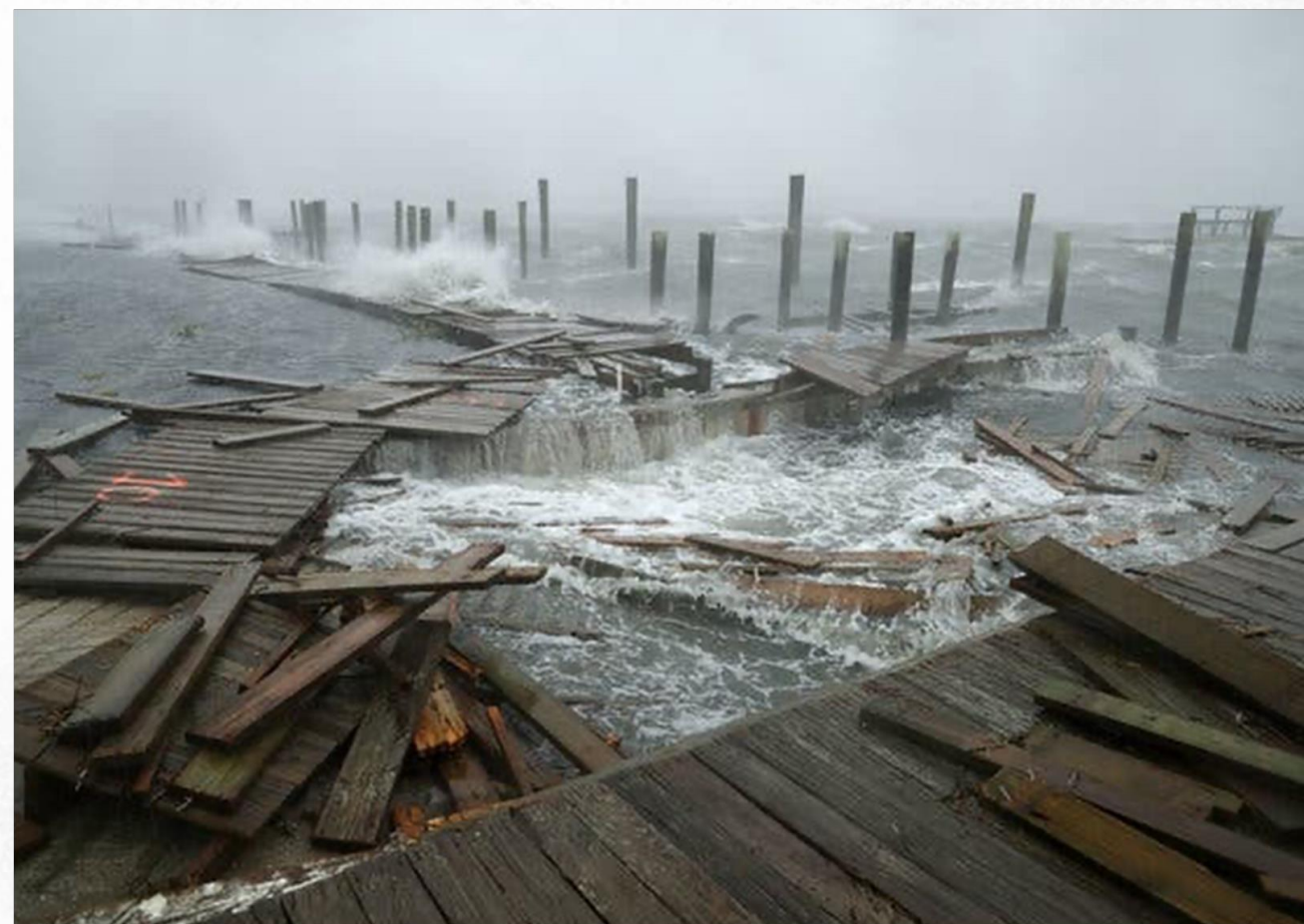
- Many verbal and written accounts from customers who say waves do not even break on their dock with ThruFlow decking

THRUFLOW

PREMIUM DECKING SOLUTIONS



Benefits of ThruFlow?



THRUFLOW

PREMIUM DECKING SOLUTIONS



Benefits of ThruFlow?



THRUFLOW

PREMIUM DECKING SOLUTIONS



Benefits of ThruFlow?



THRUFLOW

PREMIUM DECKING SOLUTIONS



Benefits of ThruFlow?



Warranty

- Lifetime Limited Warranty
- Coverage against material defects in workmanship and materials
- Coverage against rot, decay and termite damage



How does ThruFlow compare to other decking options?

There are many options for decking materials, but none stand up to the elements and everyday wear and tear the way ThruFlow can!

ECO-FRIENDLY DESIGN

Open-surface design allows sunlight and water to pass through, reducing the impact on the environment and protecting against weather damage.

BUILT TO LAST BY EXPERTS

At Thruflow, pass-through decking is our one and only business. Besides being the industry pioneer we keep ThruFlow as our expertise to make the best product for the consumer.

LIFETIME LIMITED WARRANTY

We're confident in our panels' design and quality; for added peace of mind ThruFlow offers a Lifetime Limited Warranty.

THRUFLOW VS WOOD

ThruFlow	Wood
ThruFlow will not absorb moisture	Wood will eventually rot, curl, splinter & deteriorate due to moisture
ThruFlow is maintenance-free and stays attractive for a very long time	Wood requires regular maintenance including staining or sealing
ThruFlow is extremely slip-resistant even when wet and meets ADA standards for anti-slip requirements	Wood can become extremely slippery when wet
ThruFlow will not cause a splinter	Wood can cause splinters
Installs in up to half the time it takes for wood	Much more labor-intensive to install than ThruFlow

THRUFLOW VS COMPOSITE

ThruFlow	Composite
<p>Contains no wood, only plastic and fiber-glass reinforcement</p> <ul style="list-style-type: none"> - No moisture problems 	<p>Contains wood fibers</p> <ul style="list-style-type: none"> - Will absorb and retain moisture and is susceptible to rot and mold
<p>ThruFlow is tested in extreme temperatures and has negligible expansion and contraction</p>	<p>Composite is sensitive to temperature</p> <ul style="list-style-type: none"> - Much more expansion and contraction than ThruFlow
<p>Everyday liquids and materials will not stain ThruFlow</p> <ul style="list-style-type: none"> - (only very harsh chemicals might) 	<p>Composites may stain easily</p> <ul style="list-style-type: none"> - Composite cannot be sanded down, so easy cleaning/refinishing is not an option
<p>ThruFlow is extremely light-weight (up to 70% less weight than many composites)</p> <ul style="list-style-type: none"> - Makes removable structures much easier to handle 	<p>Composites are generally very heavy</p> <ul style="list-style-type: none"> - This makes composite decks prone to sagging
<p>Even when wet, has excellent anti-slip</p>	<p>Can get extremely slippery when wet</p>
<p>ThruFlow can be installed in as much as half the time it takes for composites</p>	<p>Much more labor-intensive to install than ThruFlow</p>

THRUFLOW VS ALUMINUM

ThruFlow	Aluminum
Will not dent or bend	Can dent and/or bend
ThruFlow is quiet to walk on	Aluminum can be noisy to walk on
ThruFlow's rounded edges and corners do not present any dangers	Aluminum may have dangerous sharp edges or corners
Excellent warranty	Aluminum generally offers very limited short-term warranties
ThruFlow does not typically get hotter than ambient air temperature	Aluminum can become extremely hot to walk on



DIRECT COMPETITION: General Notes

OUR COMMITMENT AS THE PIONEER

Many of the direct competitors have attempted to imitate ThruFlow to try to make a lower cost product. Lower cost is at the expense of quality.

OUR COMMITMENT TO YOU

ThruFlow works hard to build a national brand and generate leads and market awareness so that we and our partners (you) benefit. Direct competitors have no distribution strategy (i.e. most will sell to anyone and everyone, undercutting the retailer).

OUR COMMITMENT IN WRITING

Our published specs and warranty should make any contractor feel much better about using ThruFlow over new products that haven't been market-tested (we've been perfecting ThruFlow for over 25 years!)

WHY THRUFLOW?

QUALITY PRODUCTS AND A NAME BACKED BY SOLID EXPERIENCE



BUILD IT

ENJOY IT



PETER CLARK

713-598-9480 cell

281-549-4150 fax

pclark@pearsonpilings.com

pclark@gulfcoastmarinesolutions.com

www.pearsonpilings.com



THRU*  *FLOW

PREMIUM DECKING SOLUTIONS

WWW.THURFLOW.COM

